

## VFL FIBERPOINT®

### Application note 1: Cleaning the 2.5 mm universal connector

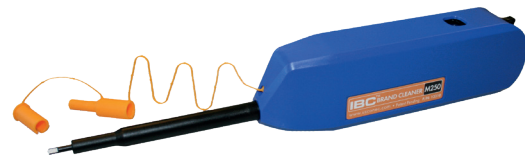
**Increasing data rate in fiber optical networks strongly demands higher mindfulness on cleanliness of connector ferrule end faces. This applies as well to even temporary connections for i. e. test applications. Transferred contamination is a permanent risk. “Inspect – Clean – Connect” is the mantra of many fiber optical activities. The universal adapter of the Visual Fault Locator needs attention re this. Here FIBERPOINT® 250 shall serve as a representative example.**

All IMM Photonics made FIBERPOINT® series Visual Fault Locators have a universal connector (patented) for direct connecting all kind of 2.5 mm ferrule size based fiber optical connectors.

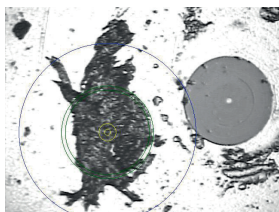
FIBERPOINT® series products mostly are in use for continuity check, to identify poor splices, sharp bends or stressed areas in fiber optical cables. Often without a second thought connectors of unknown cleanliness are attached. This has the implicit danger of unintended transfer of contamination via the contaminated end face of the fiber stub of the Fault Identifier to follow on connections.

With a Lightel ViewConn VC Plus Video Fiber Microscope, equipped with two video ports, the fiber stub end face, as well as the ferrule end face of connector can be inspected by just switching the input channel. An adapter tip SC/FC/Female (PT2-FS/PC/F 743\_126), attachable to the handheld probe of product series ViewConn, Connector Inspector and Digital Inspector (part nrs. 743\_100/743\_102/743\_109) looks in to the FIBERPOINT® universal connector.

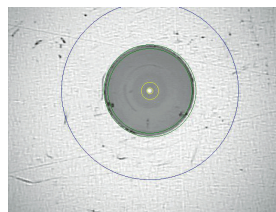
**In case of contamination identified (Fig. 4) dry cleaning by using an IBC™ Brand Cleaner M250 (part.-nr. 743\_158) is recommended.**



We recommend to use the IBC™ Brand Cleaner M250 what cleans a spot of 1.8 mm in diameter. Well known IBC-SC or IBC-LC are cleaners for standard applications. They clean a spot of 0.8 mm diameter, what is



Particles transferred from connector end face to fiber stub end face in FIBERPOINT® 250 by just one time mating.



Cleaned by just „one click“ with IBC™ Brand Cleaner M250. Clean end face ready for further use.

sufficient in common applications. To clean the port of a test tool demands to use best dry cleaning tool available. IBC™ Brand Cleaner M250 and appropriate adapter for video microscope are must haves in fiber optical test tool boxes.

Individual. Innovative. Exceptional.

