

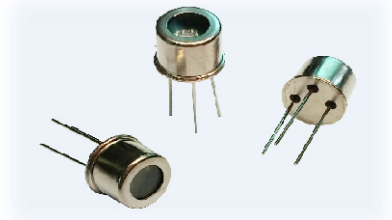
UV Sensor Module

GUVB-T21GH



Features

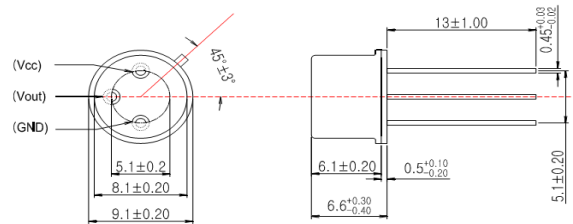
- Single Supply Voltage Operation
- Amplified Voltage Output
- High Sensitivity and Good Solar Blindness
- Small and Compact Size



Applications

- UV-B Lamp Monitoring
- UV Index monitoring

Outline Diagrams and Dimensions(unit:mm)



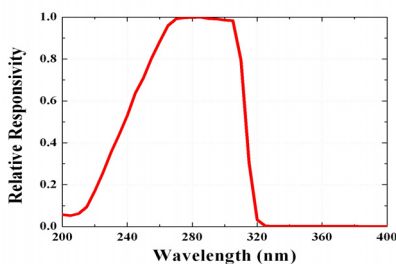
Absolute Maximum Ratings

Parameter	Symbol	Min.	Max.	Unit	Remark
Storage Temperature	T_{st}	-40	90	°C	
Operating Temperature	T_{op}	-30	85	°C	
Supply Voltage	V_{cc}		5.5	V	
Soldering Temperature	T_{sol}		260	°C	within 10 sec.

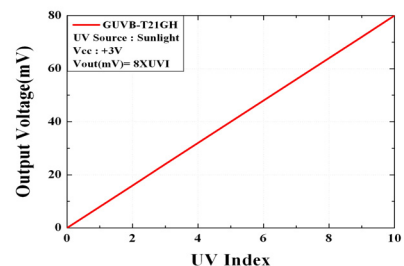
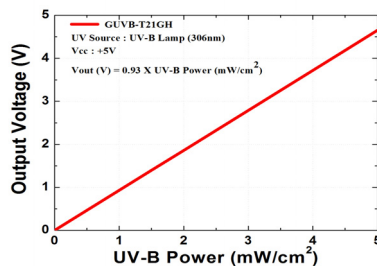
Characteristics (at 25°C)

Parameter	Symbol	Min.	Typ.	Max.	Unit	Remark
Supply Voltage	V_{cc}	1.8		5.5	V	DC
Supply Current	I_Q		50		μA	
Responsivity	R_p		1.3		mV/nW	at 300 nm
Spectral Detection Range	λ	220		320	nm	10% of R_p
Output Voltage	V_{out}		0.93		V	1 mW/cm ²
			8		mV	1 UVI
Detection Power Range	P	0		5.38	mW/cm ²	$V_{cc}=5V$
Rising Time	T_r		3		ms	

Responsivity Curve



Output Voltage along UV Power



Caution ESD can damage the device hence please avoid ESD.